



**SP FAIR 18**  
Design by Manuel Vivian

Collection consisting of recessed downlights, wall lamps, ceiling lamps and suspended lamps with chromed metal frame and glass diffuser. Available in several colours and sizes. Built-in (dimmable for some versions) LED light source.

Typology: suspended

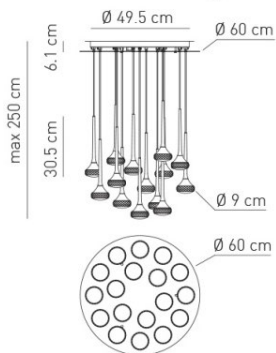
**Ratings**

- Built in **LED** module
- CCT 2700 K
- Diffused light
- Surface installation over holes
- Supply voltage ~220-240V
- Switch mode: on-off
- Dimmable 1-10V LED driver
- Steel frame

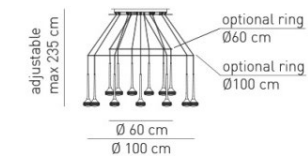
Product code composition

kg 20.1 m<sup>3</sup> 0.28

**FAIRY / DRIVER INCLUDED**

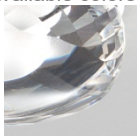


Type	Article	Colours	Finish	Source
SP	FAIR 18	CS crystal AM amber GR grey	CR white + chrome	LED 18 x 5,9W diffused beam - 2700K



18 x ~717 lm ~121 lm/W 110-240VAC  
 example composition code SP FAIR18 CS CR LED

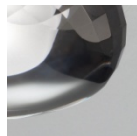
Available colors



CS  
Crystal



AM  
Amber



GR  
Grey



CR  
Chrome

CUSTOMER \_\_\_\_\_ NOTES \_\_\_\_\_

SPFAIR18 \_ \_ \_ \_ LED

**NOTICE:**

Luminous flux (lm) and efficacy (lm/W) for all built in LED luminaires is based on nominal ratings of the LED sources. Technical data could be subject to alteration without notice. Axo Light does not provide legal guarantee for the accuracy of this data sheet.